



# INDOFINE Chemical Company, Inc.

121 Stryker Lane, Bldg. 30, Suite 1 • Hillsborough, NJ 08844 • U.S.A.

Phone: (908) 359-6778 • FAX: (908) 359-1179

website: [www.indofinechemical.com](http://www.indofinechemical.com)

e-mail: [chemical@indofinechemical.com](mailto:chemical@indofinechemical.com)

## CERTIFICATE OF ANALYSIS

Catalog Number: 06-710

Product Name: **INCENSOLE**

CAS Number: [22419-74-5]

Lot Number: 1608884

Chemical Formula: C<sub>20</sub>H<sub>34</sub>O<sub>2</sub>

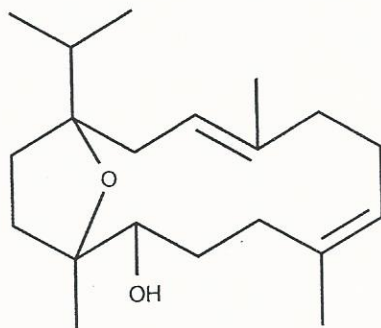
Molecular Weight: 306.48

Appearance: Colorless oily liquid

Loss on Drying: 0.8%

Storage: Store in a cool, dry place. Protected from light.

Purity(HPLC): 99.95%





# INDOFINE Chemical Company, Inc.

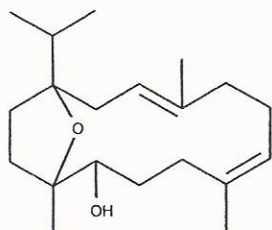
121 Stryker Lane, Bldg. 30, Suite 1 • Hillsborough, NJ 08844 • U.S.A.

Phone: (908) 359-6778 • FAX: (908) 359-1179

website: [www.indofinechemical.com](http://www.indofinechemical.com)

e-mail: [chemical@indofinechemical.com](mailto:chemical@indofinechemical.com)

## HPLC ANALYSIS



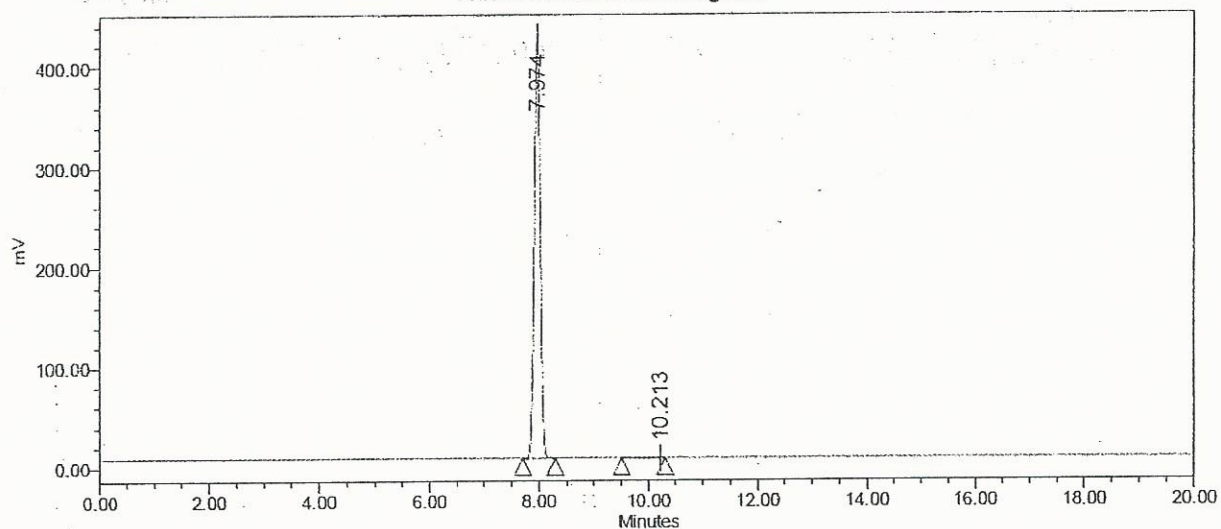
Catalog No.: 06-710  
Product Name: Incensole  
Lot No.: 1608884

### SAMPLE INFORMATION

Sample Name: Incensole  
Sample Type: Unknown  
Vial: 1:D,1  
Injection #: 1  
Injection Volume: 10.00 ul  
Run Time: 20.0 Minutes

Acquired By: System  
Sample Set Name:  
Acq. Method Set: Incensole  
Processing Method: Samples 3  
Channel Name: SATIN  
Proc. Chnl. Descr.:

Auto-Scaled Chromatogram



#### Peak Results

Name	RT	Area	% Area	USP Plate Count	USP Resolution
1	7.974	3187703	99.95	24084.51	
2	10.213	1580	0.05	3037.52	4.69